

  
**Rhino-Mat™**  
ALL IN ONE AUTO MAT WASH & DRY SYSTEM

*Experience the Difference  
in Mat Cleaning Technology*



**Rhino-Mat #1 Mat Cleaner**

Rhino-Mat is the industry leader in Automotive floor mat cleaning systems. One simple 30 second process is all it takes for vehicle mats to be washed, dried to the touch and ready to go!



**Model No: RHM-AC, RHM-AS, RHM-ASC**

**Features:**

- Automatic floor mat cleaning solutions for carpet and rubber mats
- Brush off vehicle mat within 7seconds
- Remove ground-in dirt, sand and pet hair
- Made for year-round use without water
- Auto-counter, keep track of the number of mats you clean and watch your profits increase
- Large roller wheels for easy movement with optional ground mounting
- Auto flat feeding operations to prevent folding or damages to a mat
- Portable for indoor and outdoor use
- Safe and easy operation
- Plug in to anywhere for ready to use no other set up or installation needed
- Automatic shut off timer and time adjustable & energy efficient
- Heavy-duty construction- built to last

**Specifications:**

WEIGHT	243 lbs
WIDTH	41"
DEPTH	20"
HEIGHT	42"
POWER	110 V (20 Amp)
SPEED	7 Second per Mat
MAT SIZES SUPPORT	Up to 32"

- **RHM-AC** (Carbon Steel with Powder Coating) Recommended for enclosed locations
- **RHM-AS** (Stainless Steel) for all weather use
- **RHM-ASC** (Stainless Steel) Coin Acceptor, Self-Serve Operation



Model: RHM-AS



Model: RHM-ASC



**Model No: RHM-CS, RHM-SS (Full-Serve Model)**



**Features:**



- Absorbent sponge and steel rollers to squeeze out moisture
- Only machine on the market with a patented extraction tray which will dry the mats complete to touch
- Automatic floor mat cleaning solution for carpet & rubber mats
- One-step mat washing & drying process. Save on labor & time
- Washes and dries a vehicle mat within 30 seconds
- Removes ground-in dirt, oil, sand, pet hair and most stains
- Auto-flat feed operation to prevent folding or damage to a mat
- Safe & easy operation and maintenance
- Integrated auto heating system made for year-round use
- Control control board system
- Automatic shut-off timer, time adjustable & energy efficient
- Auto-counter, keep track of the number of mats you clean and watch your profits increase
- Large roller wheels for easy movement with optional ground mounting
- ETL Certified (Safe and hazard free operation)

**Specifications:**

WEIGHT	500 lbs
HEIGHT	50"
WIDTH	40"
DEPTH	26"
POWER	110 V/60 Hz (30 Amp Rqmt.)
WATT	3,000 Watts
SPEED	2 Mat per Minute
MAT SIZES SUPPORTED	Up to 32"

- **RHM-CS** (Carbon Steel with powder coating) Recommended for enclosed locations
- **RHM-SS** (Stainless Steel) for all weather use
- \* Both RHM-CS and RHM-SS are the same except in material used



Equipped with an Auto-Chemical Injection System

Push Button Start & Stop Operation

Unmatched extraction method creates a powerful seal in the vacuum drum



Model: RHM-CS, RHM-SS



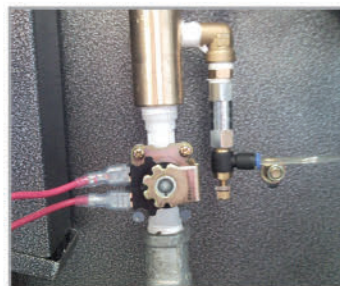
**Model No: RHM-SSBC** (Self-Serve Model / Bill & Coin Operation)



**Features:**



- Digital L.E.D. time display
- "Pass" button to release mats from the machine
- Fully adjustable bill, coin, and time settings in the control box
- Automatic floor mat cleaning solution for carpet & rubber mats
- One-step mat washing & drying process. Save on labor & time
- Washes and dries a vehicle mat within 30 seconds
- Removes ground-in dirt, oil, sand, pet hair and most stains
- Auto-flat feed operation to prevent folding or damage to a mat
- Safe & easy operation and maintenance
- Integrated auto heating system made for year-round use
- Digital control board system
- Automatic shut-off timer, time adjustable & energy efficient
- Auto-counter, keep track of the number of mats you clean and watch your profits increase
- Large roller wheels for easy movement with optional ground mounting
- ETL Certified (Safe and hazard free operation)



Equipped with an Auto-Chemical Injection System



Mounting Bolt

**Specifications:**

WEIGHT	500 lbs
HEIGHT	50"
WIDTH	40"
DEPTH	26"
POWER	110 V/60 Hz (30 Amp Rqmt.)
WATT	3,000 Watts
SPEED	2 Mat per Minute
MAT SIZES SUPPORTED	Up to 32"



**Equipped with:**



MEI Bill Validator and IDX Coin acceptors equipped.



Model: RHM-SSBC

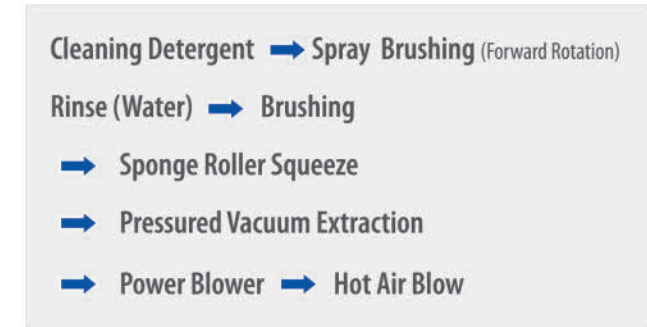


**Model No: RHM-OM, RHM-OMBC**

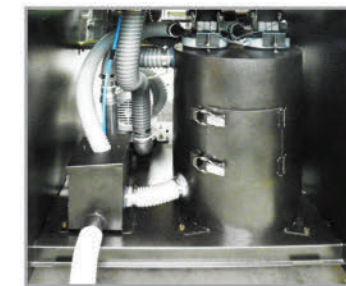
**Features:**

- Automatic floor mat cleaning solutions for carpet and rubber mats
- Duel Brushing System
- Control cleaning speed with dual keypad
- 99.9% Dried mats in single cycle of cleaning
- Chemical injection system with separate final rinsing operation
- Powerful air blowers that will eliminate moisture on both sides of mat
- Heavy-duty construction, built to last (all stainless steel)
- Auto flat feeding operations to prevent folding or damages to a mat
- Larger roller wheels for easy movement with optional ground mounting
- Safe & easy operation and maintenance
- Self-serve models are also available

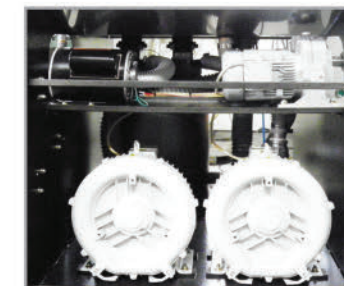
**Mat Cleaning Procedure:**



- **RHM-OM** (Stainless Steel) for all weather use



Unmatched extraction method creates a powerful seal in the vacuum drum



Power Blower

**Specifications:**

WEIGHT	740 lbs (335 Kg)
HEIGHT	50" (1,270 mm)
WIDTH	46" (1,170 mm)
DEPTH	42" (1,070 mm)
POWER	220V (208V) / 60Hz / 40 Amp
WATT	7,000 Watts (7KW)
SPEED	Adjustable
WATER HOSE CONNECTION	5/8" Fitting
DRAIN HOSE SIZE	2" Diameter x 10' Length
CHEMICAL SPRAY	Adjustable
MAT SIZES SUPPORTED	Up to 32"
MATERIAL	Stainless Steel (S.S)
DRY RATIO	99%



Model: RHM-OM



# Elephant-Vac

360° FLEX MOBILITY VACUUM SYSTEM

**Models:** ELV-CSF, ELV-CSC, ELV-CSBC

**Features:**

- Utilizes unique swinging boom system hose
- Boom swings 360 degrees around and up and down motion
- Very easy to maneuver inside and around vehicles
- No more worries about the hose lying or dragging on the floor
- Compact slim design to save space
- 2 Large bag filters and filter container for high capacity and quick maintenance
- 2 Heavy duty high speed vacuum motors for efficient cleaning and reliability
- Large diameter hose
- Stainless Steel construction for long life and durability
- 4 Ground mounting holes for security
- Sliding locks on panel with control box and money container for security

**Specifications:**

HEIGHT (Total)	12'
HEIGHT (Body)	56.5"
HEIGHT (Boom)	87"
WIDTH	16"
DEPTH	13.5"
HOSE LENGTH	16'
POWER	110 V (20 Amp)



Available in Self-Serve Model



Vacuum Motors



Vacuum Wand



Available in Full-Serve Model



Model: ELV-CSBC



# Rhino-Magic

LIQUID CARPET CLEANER

**Features:**

- Concentrated fast drying, low foaming shampoo ideal for Rhino Mat Machines
- Deep cleaning with optical brighteners that beautify carpets

**Direction for Rhino-Mat Machine:**

Dilute 1 to 3 parts for Heavy Duty. Dilute 1 to 5 parts for Light Duty  
 Install according to you Rhino-Mat model's directions  
 Dilute one part product to 5 parts water for pre-spot spray



**1 Gallon**  
1 Gallon x 4 pcs / Case



**5 Gallon**



**30 Gallon**



**55 Gallon**



25030 Avenue Stanford, Suite 70  
Valencia, CA 91355

866.644.5177 Toll Free  
213.480.8899 Tel  
213.291.7696 Fax  
info@cleanwd.com

[www.cleanwd.com](http://www.cleanwd.com)  

### About Us:

For the past 20 years we have been dedicated to the innovative design and technology of developing superior mat cleaning systems. Our dedication to manufacturing superior mat cleaners has brought us worldwide recognition.

Our mat cleaners are currently operating in the US, Canada, Asia and Europe.

The quality and effectiveness of our mat cleaners have been improved over the years to meet the demands of our customers in order to better meet their needs. We value our working relationships with our new and returning customers, which is why we are devoted to bringing quality equipment to those who need it.

### Member of:



***Rhino-Mat***, the original in floor mat washing & drying technology